

OWYHEE COUNTY COMMISSIONERS' MINUTES

August 28, 2023

OWYHEE COUNTY COURTHOUSE, MURPHY
OWYHEE COUNTY, IDAHO

Present during the meeting were Commissioner Hoagland, Commissioner Aberasturi, Clerk Barkell, Deputy Clerk Yoshikane, HR Director Fahey, Treasurer Dygert, Sheriff Kendrick, Chief Crawford, NRD Desmond, Sgt. Vincent, Assessor Nettleton, and Deputy Kipper; residents Cindy Bachman and Sid Erwin; PacifiCorp – Roger Yensen, Rachel Roberts, Caitlin Campbell, Patricia Peterson, & Tami Moody; ID Power – Jeff Maffuccto; and BLM-Jarbidge – Joanna Tjaden. Via Zoom – P&Z Director Huff, VWC Maund, Chief Probation Admin Smith, P&Z Assist. Director King, and PA Topmiller; Engineer Woodruff with Civil Dynamics and Jon Brown with The Avalanche; and residents Victoria Collett, and Tim Riha.

Commissioner Hoagland motioned to approve the Letter of Support to City of Marsing regarding the proposed Bruneau Hwy Reconstruction Project. Seconded by Commissioner Aberasturi. Motion carried.

Commissioner Hoagland motioned to approve the claims report as presented. Seconded by Commissioner Aberasturi. Motion carried.

| Department | Amount |
|--------------------------------|------------|
| Current Expense Fund | \$ 22,816 |
| Road and Bridge Fund | \$ 641,888 |
| District Court | \$ 594 |
| Probation | \$ 152 |
| Solid Waste | \$ 9,924 |
| 911 | \$ 189 |
| Waterways Fund | \$ 80 |
| Off Highway Vehicles | \$ 32 |
| Election Fund, Taxing District | \$ 1,285 |
| Capital Project Fund/ARPA | \$ 5,301 |

Commissioner Hoagland motioned to approve the minutes from the August 21 & 23, 2023 meetings. Seconded by Commissioner Aberasturi. Motion carried.

Commissioner Hoagland motioned to approve the Bid Award for the Owyhee Justice Center Building Remodel to Succor Creek Construction. Seconded by Commissioner Aberasturi. Motion carried.

Commissioner Hoagland motioned to approve the County Resolution 2023-30 – Retirement of Service Dog Skye to Handler. Seconded by Commissioner Aberasturi. Motion carried.

Commissioner Hoagland motioned to approve the Idaho Power regarding Customer Consent to Proceed with Engineering/Design for the County Justice Center with the Chairman's signature for the Board. Seconded by Commissioner Aberasturi. Motion carried.

Commissioner Hoagland motioned to approve the Owyhee and Canyons Counties Pathology Services FY2024 Agreement. Seconded by Commissioner Aberasturi. Motion carried.

Commissioner Hoagland motioned to approve certificates of residencies CSI 23-06 and CWI 23-16 & CWI 23-17. Seconded by Commissioner Aberasturi. Motion carried.


Commissioner Hoagland motioned to approve the County Fiscal Year 2024 budget in the amount of \$18,347,562.00. Seconded by Commissioner Aberasturi. Motion carried.

Commissioner Hoagland motioned to recess as BOCC and convene as Marsing Ambulance District. Seconded by Commissioner Aberasturi. Motion carried.

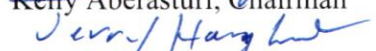
PacifiCorp Gateway West Project Manager Rachel Roberts and ID Power Jeff Maffuccto provided an update on the status of the project (see attached documents).


There being no further business the meeting was adjourned.

Dated this 5th day of September, 2023.



Kelly Aberasturi, Chairman


Attest: Angela Barkell, Clerk

By: 

Deputy Clerk

Gateway West Segment E and E-8 Transmission Line Projects

Owyhee County Commissioners
August 28, 2023
In-person Meeting



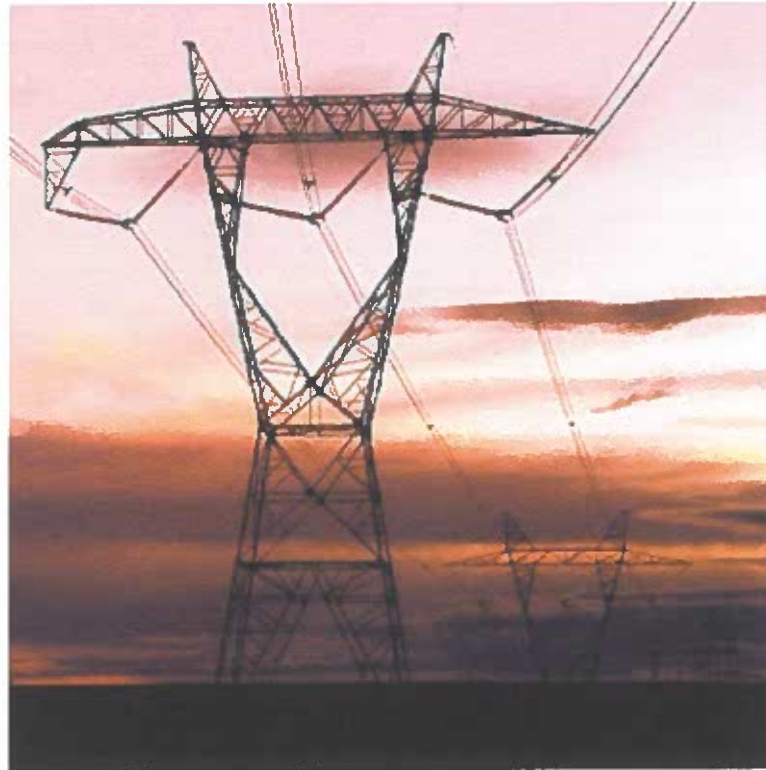


Introductions



Agenda

- Introductions
- Gateway West Program Overview
- Gateway West Segment E/E-8 Projects
- Project Schedule and Future Milestones
- Next Steps
- Questions



Gateway West Program Overview

Gateway West is a joint project between Idaho Power and PacifiCorp to build and operate approximately 1,000 miles of new high-voltage transmission lines in Idaho and Wyoming including 75.8 miles through Owyhee County.

The Project will:

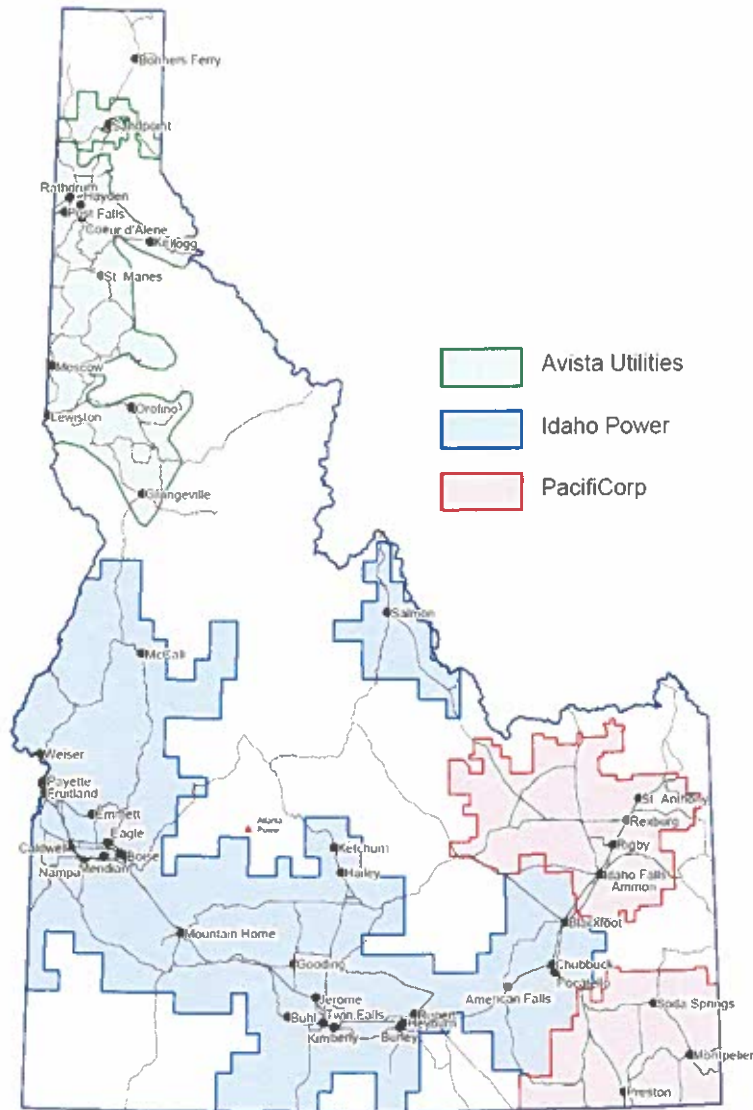
- Strengthen the electric reliability of the transmission system; reduce outages.
- Provide critical voltage support to the transmission network.
- Reduce line losses while doing so at reasonable costs for customers today and well into the future.
- Enhance the companies' ability to comply with government mandated standards.
- Enhance opportunities for future commercial development.
- Provide tax benefits during construction for materials delivered within the county and increase sales tax base during the length of the project.



An IDACORP Company

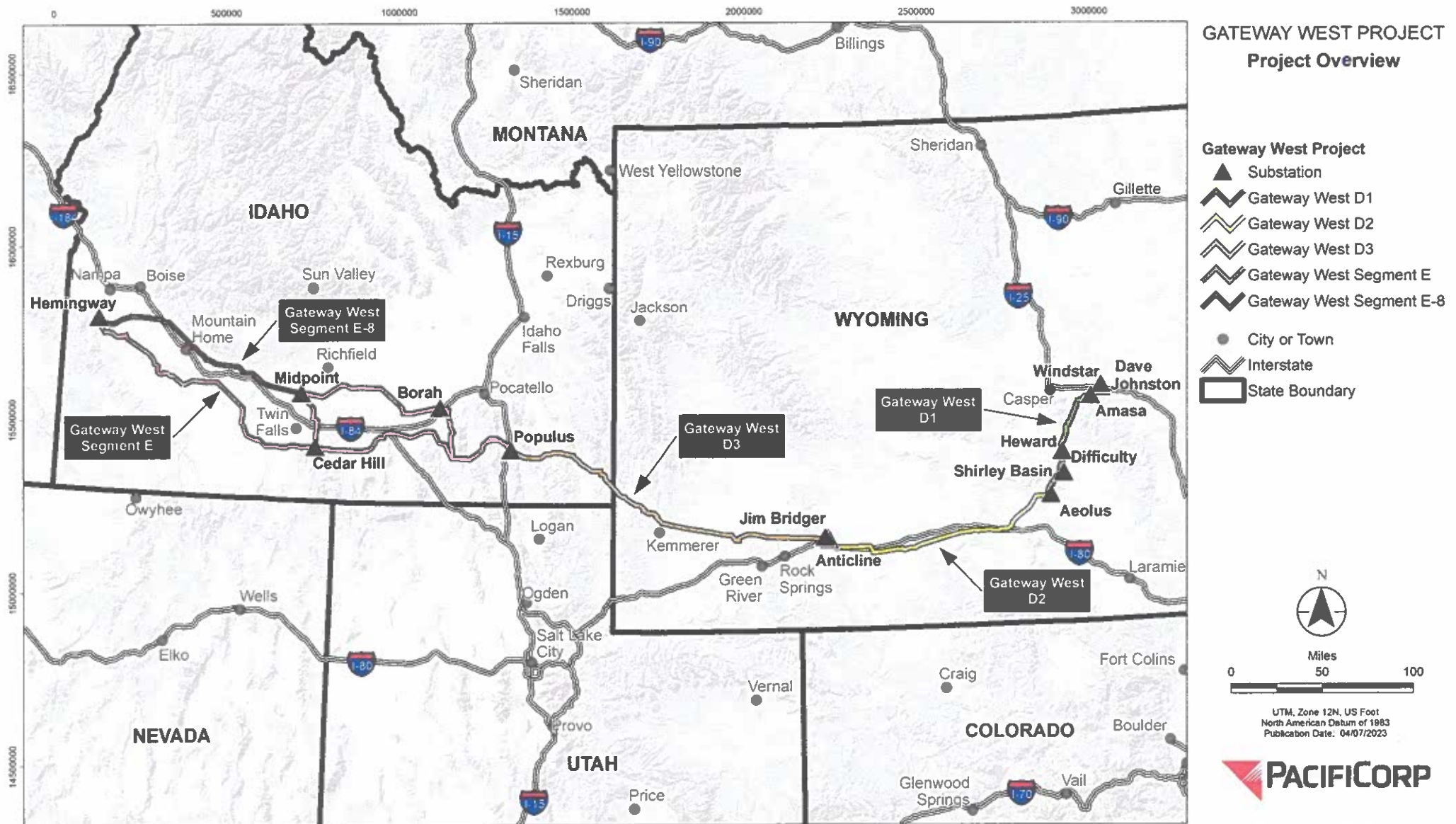


Service Area Overview

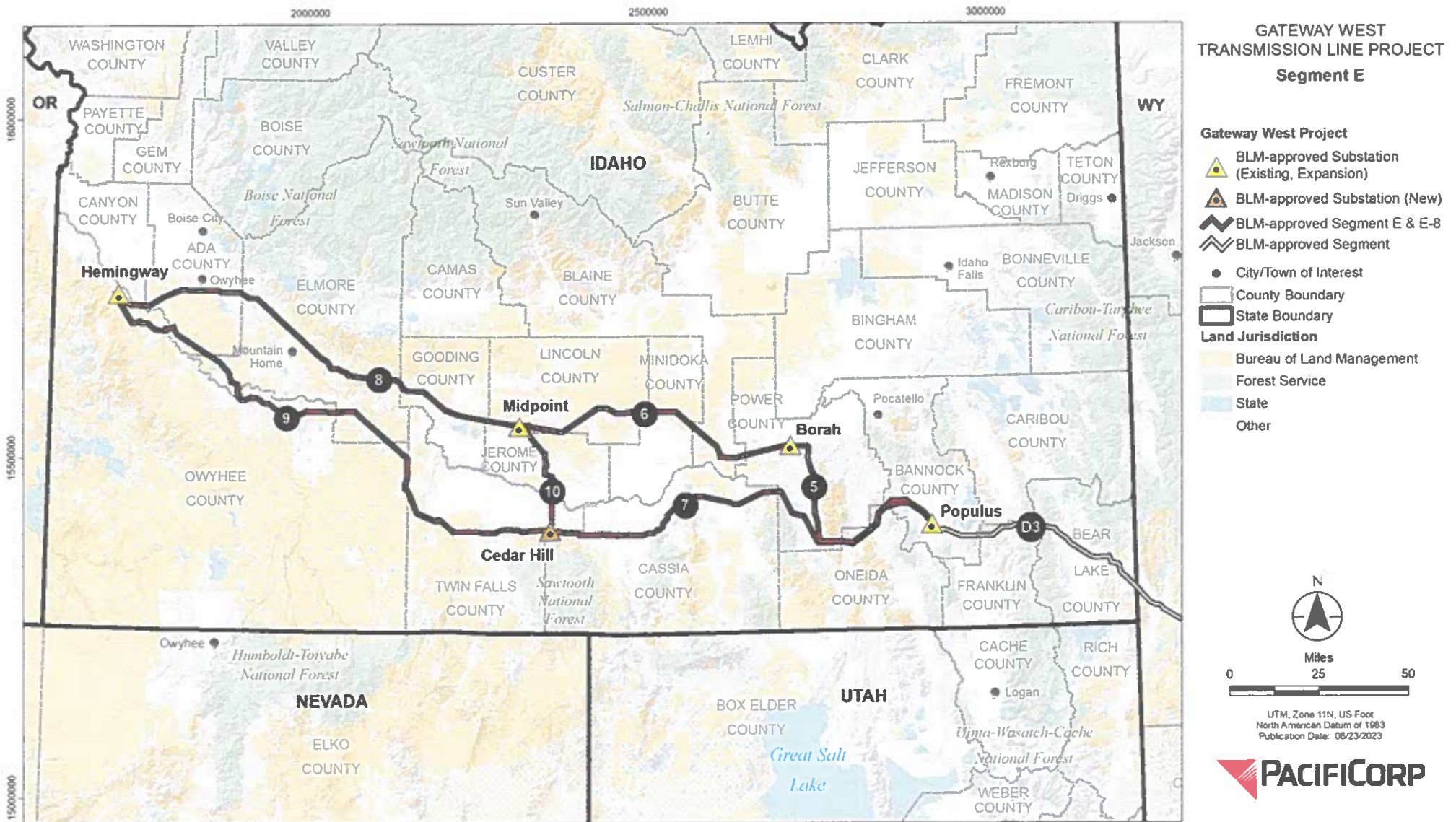


Source: Idaho Public Utilities Commission

Gateway West Program Overview



Gateway West Segment E/E-8 Projects



Gateway West Segment E/E-8 Projects

- The Gateway West Segment E and E-8 routes were designed and studied in depth during the National Environmental Policy Act (NEPA) process
 - NEPA requires federal agencies to assess the environmental effects of their proposed actions prior to making decisions.
 - Ex: new construction on federal lands, issuing a lease to occupy federal lands, issuing a grant for federal dollars
 - The routes studied during NEPA represent the indicative centerline only
 - On federal lands this is the basis for Idaho Power's and PacifiCorp's ROW grant from BLM, obtained in 2013 and 2018
 - On private lands this represents a starting point for further studies and conversations with landowners as we work to refine the route.
 - Minor refinement within our previously studied corridor is referred to as micrositeing.
 - Major refinement outside previously studied corridor may require further NEPA analysis.
- As we perform additional studies and meet with landowners the route may lead to minor changes.



Source: U.S. Department of the Interior

Project Description

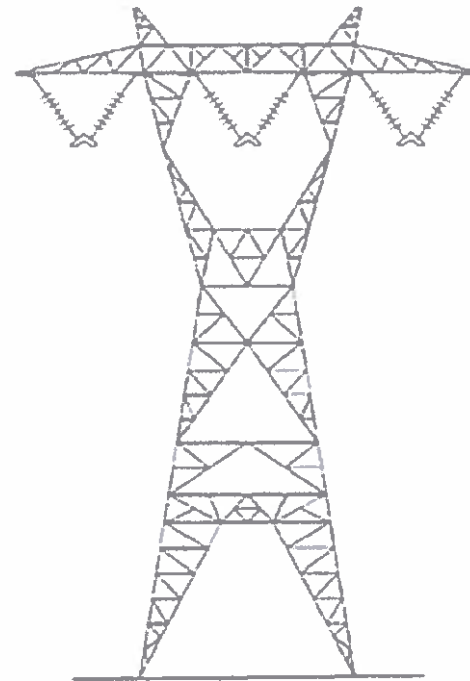


- 616 miles of new 500kV transmission line
 - Includes 85 miles of existing 345kV line to be re-energized at 500kV (Segment 6)
- ROW width 250 feet
- Self-supporting steel lattice structures
- Access to the structures will require use of both existing and proposed new access – a combination of temporary (used during construction) and long-term access (required for operations and maintenance)
- Multi-purpose areas will be utilized temporarily during construction
- Substations to be upgraded/expanded:
 - Populus (Downey, ID)
 - Borah (near American Falls, ID)
 - Midpoint (Jerome, ID)
 - Hemingway (near Melba, ID)
- Substation to be constructed – Cedar Hill (near Hansen, ID)
- 2 signal regeneration stations each for Segments 7 and 9; 3 regeneration stations for Segment 8

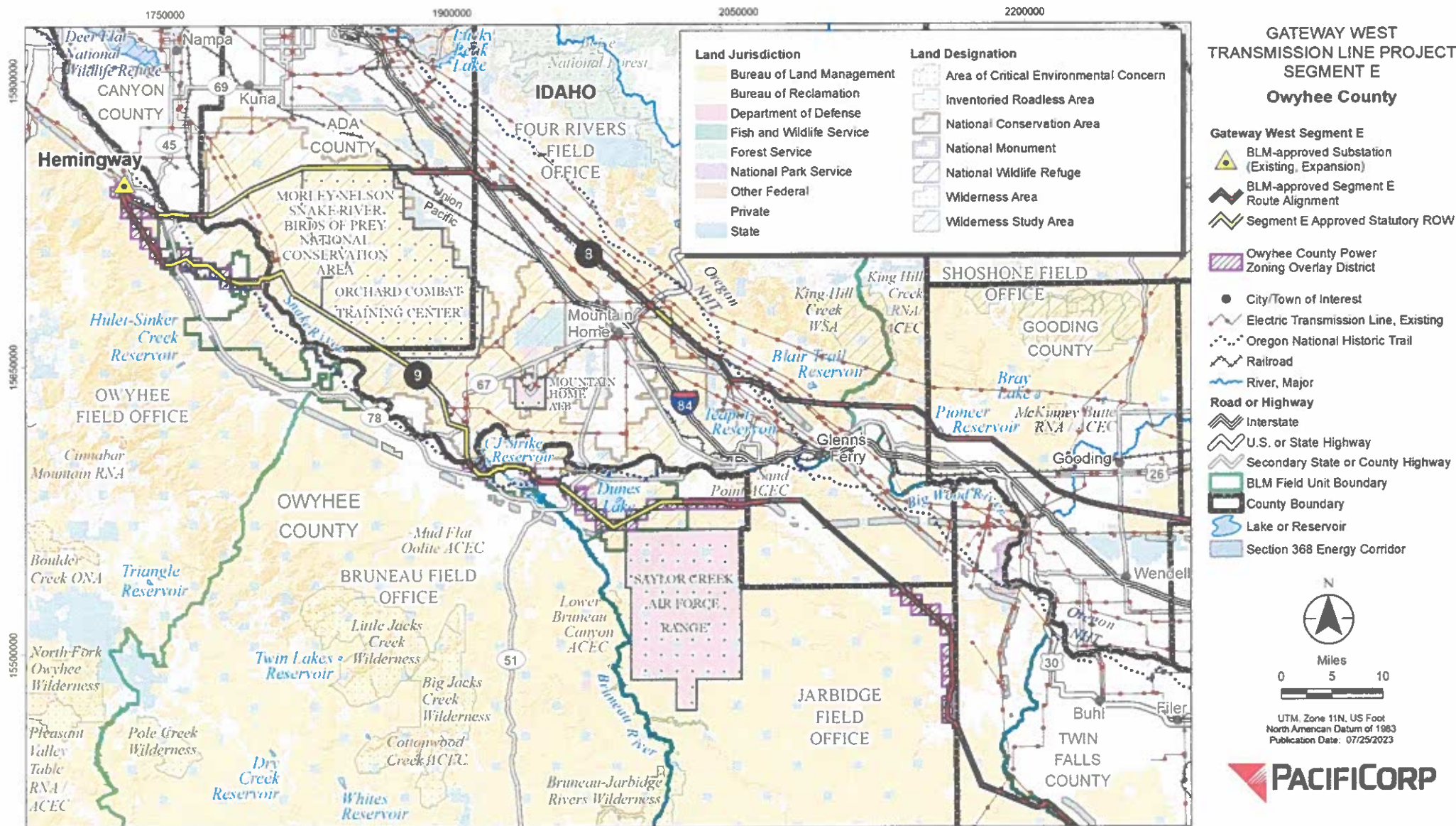
Structures



- Proposed Design:
 - Steel lattice
 - Dull galvanized
 - Average height 145 to 180 feet
 - Average span of 1200 to 1300 feet



Owyhee County Map



Owyhee County Mileage*

| | BLM Land (miles) | Privately- Owned (miles) | State Land (miles) | Bureau of Reclamation | Undetermined (miles) | Total (miles) |
|--------------------------|---------------------|--------------------------------|-----------------------|--------------------------|-------------------------|------------------|
| Segment 8 | 4.53 | 0.29 | - | 0.99 | 0.07 | 5.87 |
| Segment 9 | 61.25 | 5.72 | 2.56 | 0.13 | 0.14 | 69.80 |
| Owyhee County | 65.86 | 6.01 | 2.56 | 1.12 | 0.21 | 75.76 |

* Entirety of transmission line is within the power zoning overlay district



Project Schedule and Future Milestones



★ = Predicted In-service

Next Steps



- Initiate right of entry contact with private landowners to complete necessary studies
- Continue working with Owyhee County Planning Department, as needed
- Continue to work with the Bureau of Land Management to meet Record of Decision requirements for issuing a Notice to Proceed to construct
- Provide updates to County Commissioners 3x annually

Questions?

Project contacts for additional questions:

- **Roger Yensen:** PacifiCorp Project Manager – Pre-construction/Construction (Project Point of Contact)
 - P: (385) 481-2971 E: Roger.Yensen@pacificorp.com
- **Rachel Roberts:** PacifiCorp Pre-Construction Project Manager (Project Point of Contact)
 - P: (757) 298-4234 E: Rachel.Roberts@pacificorp.com
- **Tami Moody:** PacifiCorp Local Permitting Project Manager (Project Point of Contact)
 - P: (801) 220-2217 E: Tami.moody@pacificorp.com
- **Patricia Peterson:** PacifiCorp Senior Technical Advisor/Pre-construction
 - P: (719) 278-1300 E: Nancy.Smith2@pacificorp.com
- **Jeff Maffuccio:** Idaho Power Facility Siting Coordinator
 - P: (208) 388-2744 E: JMaffuccio@idahopower.com
- **BLM:** Idaho Power Facility Siting Coordinator
 - P: (208) 388-2744 E: JMaffuccio@idahopower.com

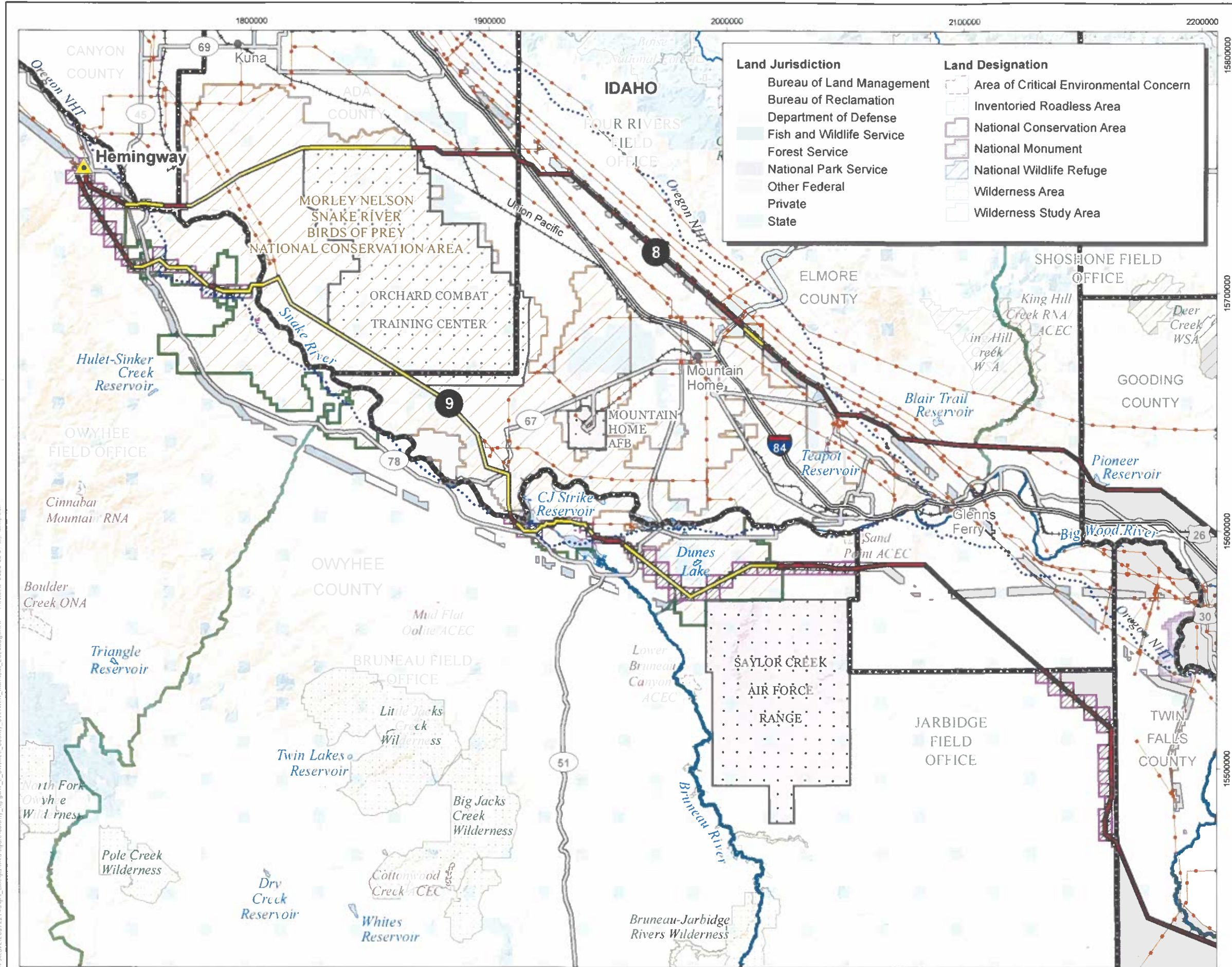


Figure No. 1

Title Gateway West Segment E
Owyhee County

Client/Project PacifiCorp
Gateway West Segment E

Project Location Southern Idaho

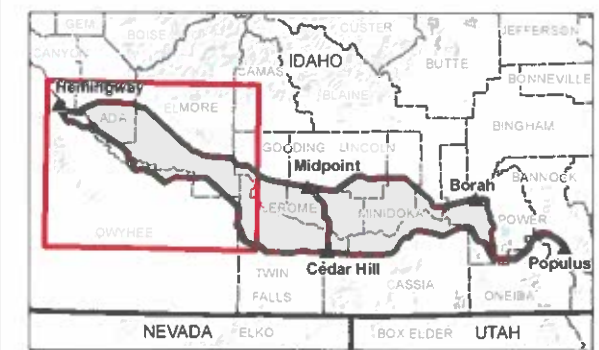
Prepared by AE on 2023-03-21
TR by DG on 2023-07-20
IR by CC on 2023-07-25

N

0 5 10 Miles
(At original document size of 11x17)
1:500,000

Gateway West Segment E

- BLM-approved Substation (Existing, Expansion)
- BLM-approved Segment E Route Alignment
- Segment E Approved Statutory ROW
- Owyhee County Power Zoning Overlay District
- City/Town of Interest
- Electric Transmission Line, Existing
- Oregon National Historic Trail
- Railroad
- River, Major
- Road or Highway
 - Interstate
 - U.S. or State Highway
 - Secondary State or County Highway
- BLM Field Unit Boundary
- County Boundary
- Lake or Reservoir
- Section 368 Energy Corridor



Notes

- Coordinate System: NAD 1983 BLM Zone 11N, US Foot
- Map is oriented to true north
- Data Sources: PacifiCorp, Stantec, BLM, Esri, Google, HIFLD, USDA FS, USFWS, USGS, WMEIC
- Background: Esri World Terrain Base